

Fókuszban a molyok 2. eladás Faunára új fajok kertje

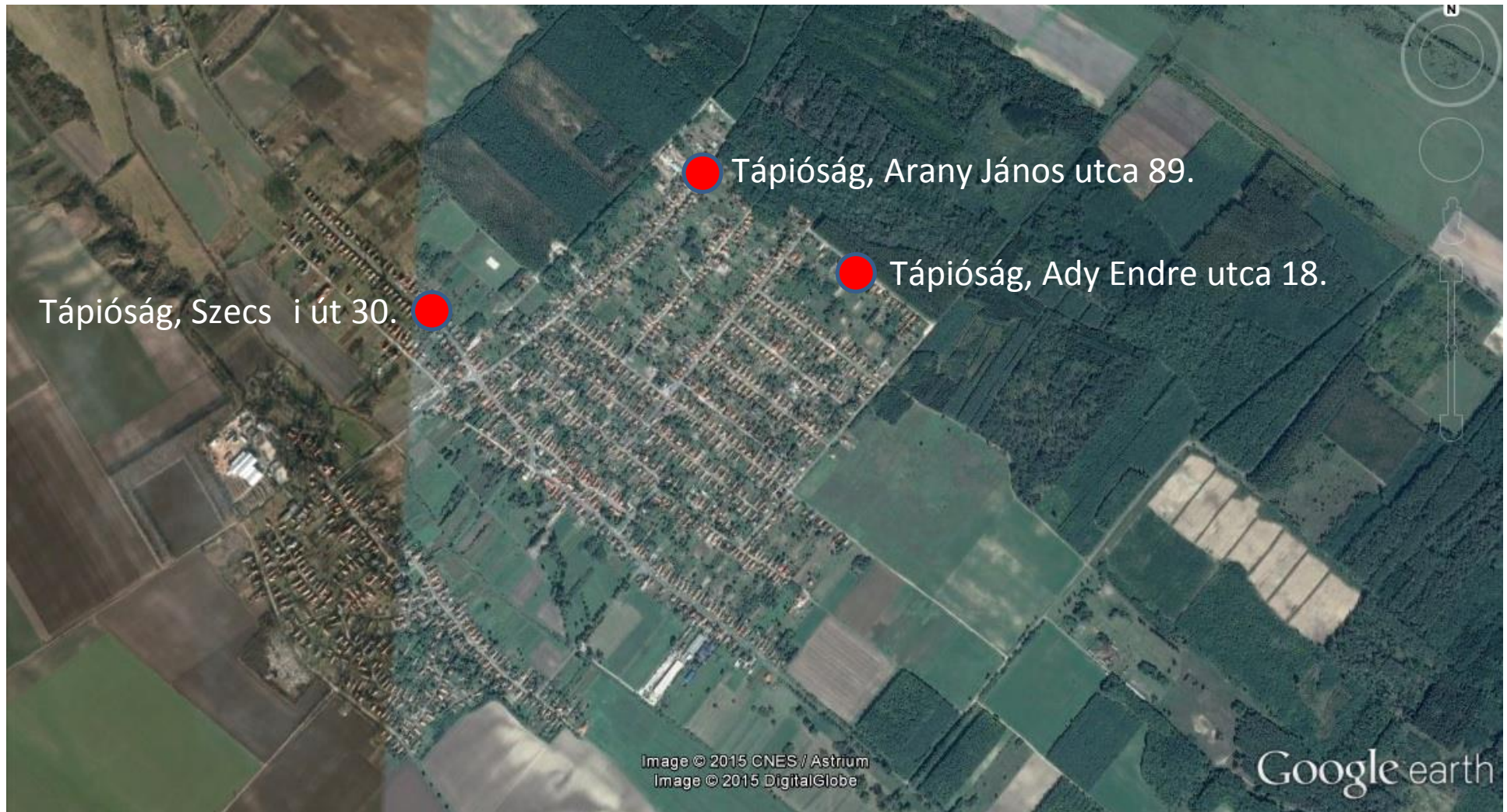
Takács Attila, Szabóky Csaba

Almamoly (*Cydia pomonella*) feromoncsapda

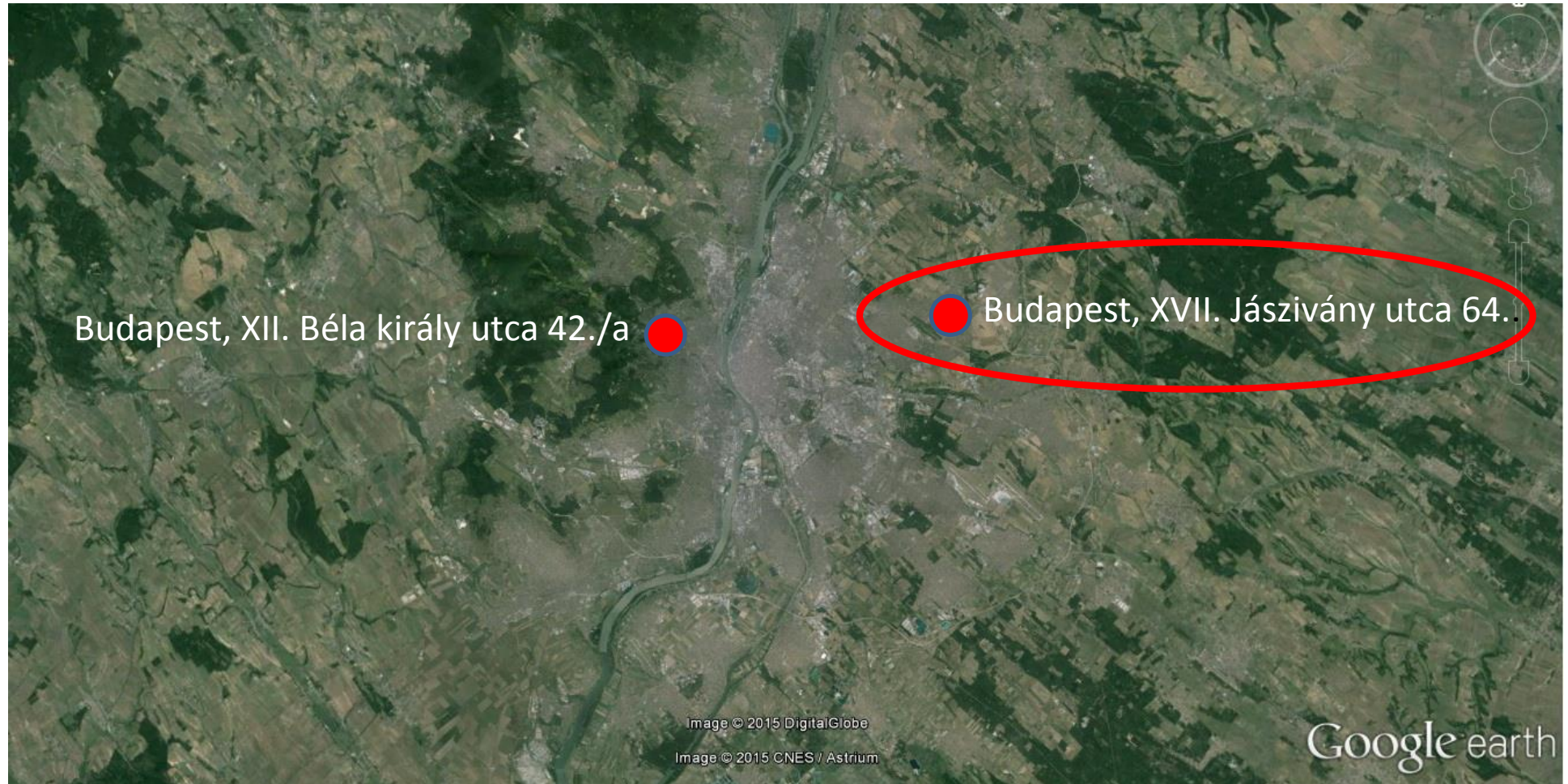
**Almamagmoly (*Aspila (=Grapholita)*
lobarzewskii) feromoncsapda**

2. Országos lepkész találkozó
2016. 07. 08. Szögliget

A feromoncsapdák elhelyezkedése Tápióságon



A feromoncsapdák elhelyezkedése Budapesten



Idegen fajok a feromoncsapdákbán

<u>Almamagmoly (<i>Aspila (=Grapholita) lobarzewskii</i>)</u>	<u>Almamoly (<i>Cydia pomonella</i>)</u>
Szilvamoly (<i>Aspila (=Grapholita) funebrana</i>)	Aranypettyes magrágómoly (<i>Pammene aurana</i>)
Galagonyabogyó-tükrösmoly (<i>Aspila(=Grapholita) janthinana</i>)	Pitypangfúró tükrösmoly (<i>Celypha striana</i>)
Hegyjuhar-magrágómoly (<i>Pammene regiana</i>)	Francia gubacsmoly (<i>Pammene gallicolana</i>)
Tölgygubacsmoly (<i>Pammene insulana</i>)	Boróka tükrösmoly (<i>Cydia interscindana</i>)
	Mezei juhar keskenymoly (<i>Caloptilia semifascia</i>)

Phthoroblastis Interscindana nov. sp. *Alis anticis rufocinereis fasciis duabus angulatis nigris, macula dorsali alba, nigrobilineata, speculo lineis plumbeis limbato, costae strigulis sex albidis, limbo alarum fimbriisque in cellula 7^{ma} niveis. 11 Mm. ♀.*

Fühler. Palpen, Kopf und Thorax röthlichgrau, Beine weißlich, Hinterleib grau.

Vorderrand
braunen
eine vort
breiterer.

Phthoroblastis Interscindana nov. sp. *Alis anticis rufocinereis fasciis duabus angulatis nigris, macula dorsali alba, nigrobilineata, speculo lineis plumbeis limbato, costae strigulis sex albidis, limbo alarum fimbriisque in cellula 7^{ma} niveis. 11 Mm. ♀.*

Fühler. Palpen, Kopf und Thorax röthlichgrau, Beine weißlich, Hinterleib grau.

Vorderflügel röthlichgrau, vor der Mitte mit einem schwarzen braunen Querstrich, welcher auf der innern Mittelrippe saumwärts eine vortretende spitze Ecke bildet. Hinter der Mitte ein zweiter breiterer. schwarzer Querstreif, welcher vom Vorderrande nach aus-

142

sen zieh
lich gera
wird. S
breite zi
den Quer
der weiß

Das
über den
Vorderr
trennt, a
linie bis
Spiegel r

an den Saum aschgrau, sehr fein schwärzlich bestäubt. Saumlinie fein schwarz, Franzen glänzend rothgrau, in Zelle 7 von einem feinen weißen Längsstrich durchschnitten, welcher die Saumlinie unterbricht und in den Flügel bis fast an den Winkel der Bleilinie reicht.

Hinterflügel dunkelbraun grau, gegen die Wurzel etwas heller. Saumlinie fein weißlich, Franzen weiß, mit dunkelbraunem Wurzeltrittheil.

MÖSCHLER, H. B. (1866): Aufzählung der in Andalusien 1865 von Herrn Graf v. Hoffmannsegg gesammelten Schmetterlinge. — Berliner Entomologische Zeitschrift **10**: 136-146

392. *Cydia interscindana*
(MÖSCHLER, 1866) (Pl. XIV)

Phthoroblastis interscindana MÖSCHLER, 1866, Berl. ent. Zschr., **10**: 141. (Spain).

[?] *opulentana* MILLIÈRE, 1875, Cat. Lépid. Alpes Marit.: 278. (France).

forewing
sh, in dis-
sisting of
ards costa
th brown;
a creamy
ar middle;
th whitish
Hindwing

nish grey;
paler than

f sacculus
aded, with
all ventral

, with two
membra-

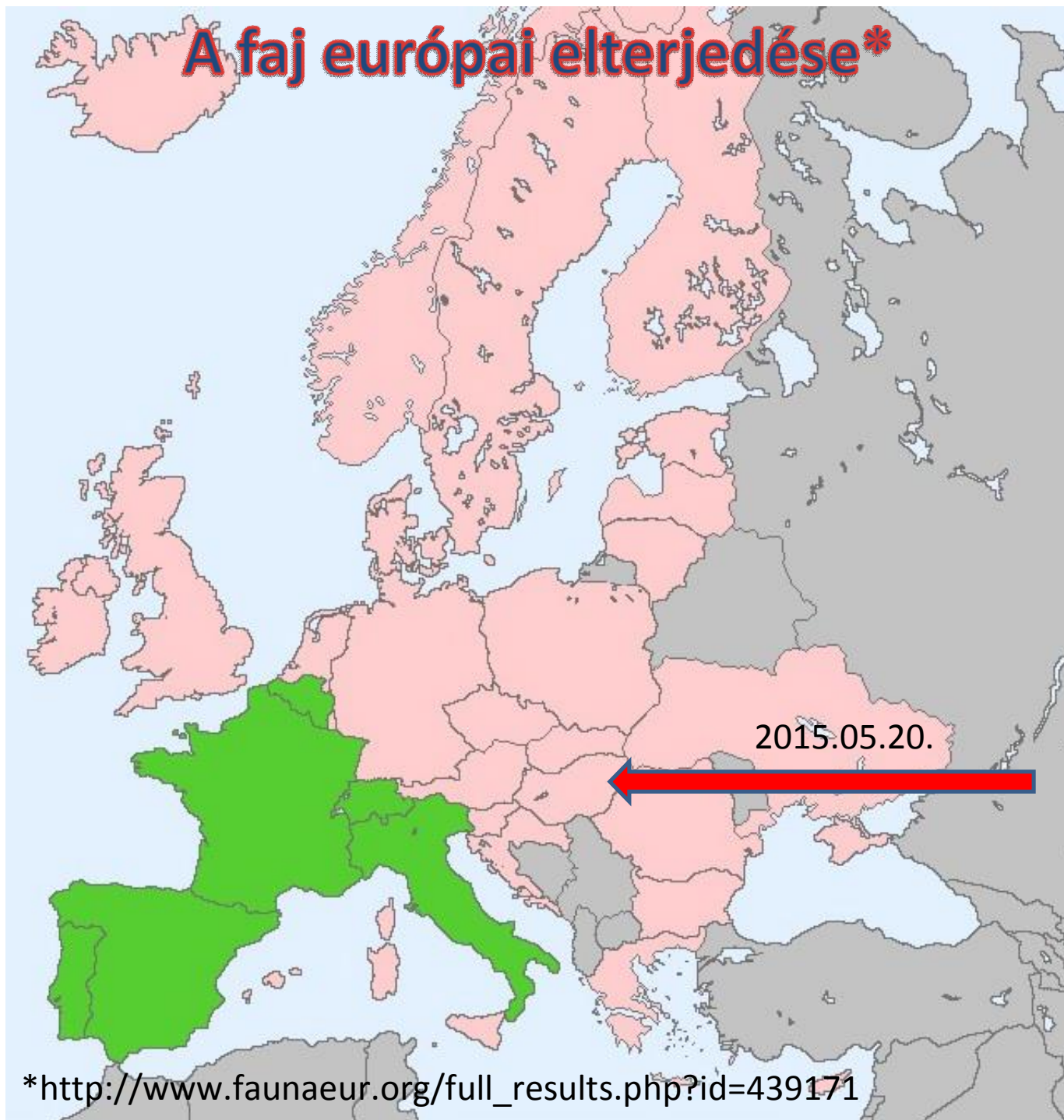
Early stages unknown.

Biology. Two generations yearly. Larva feeds in twigs of *Juniperus oxycedrus* causing leak of resin, occasionally also their withering. Moth in IV–V.

Distribution. Western part of Mediterranean: Spain, France and Italy.

RAZOWSKI, J. (2003): Tortricidae (Lepidoptera) of Europe Volume 2 Olethreutinae 115 p.

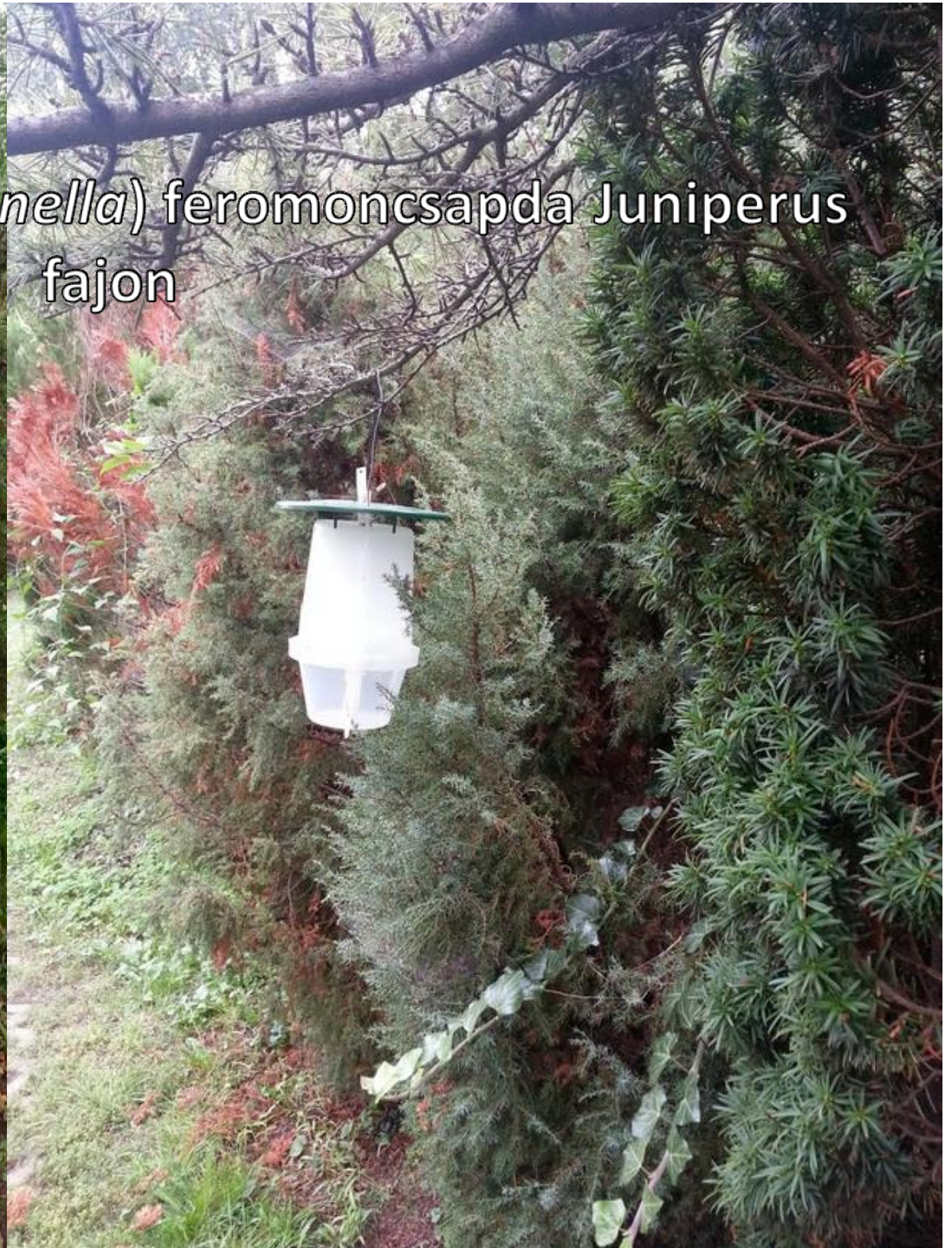
A faj európai elterjedése*



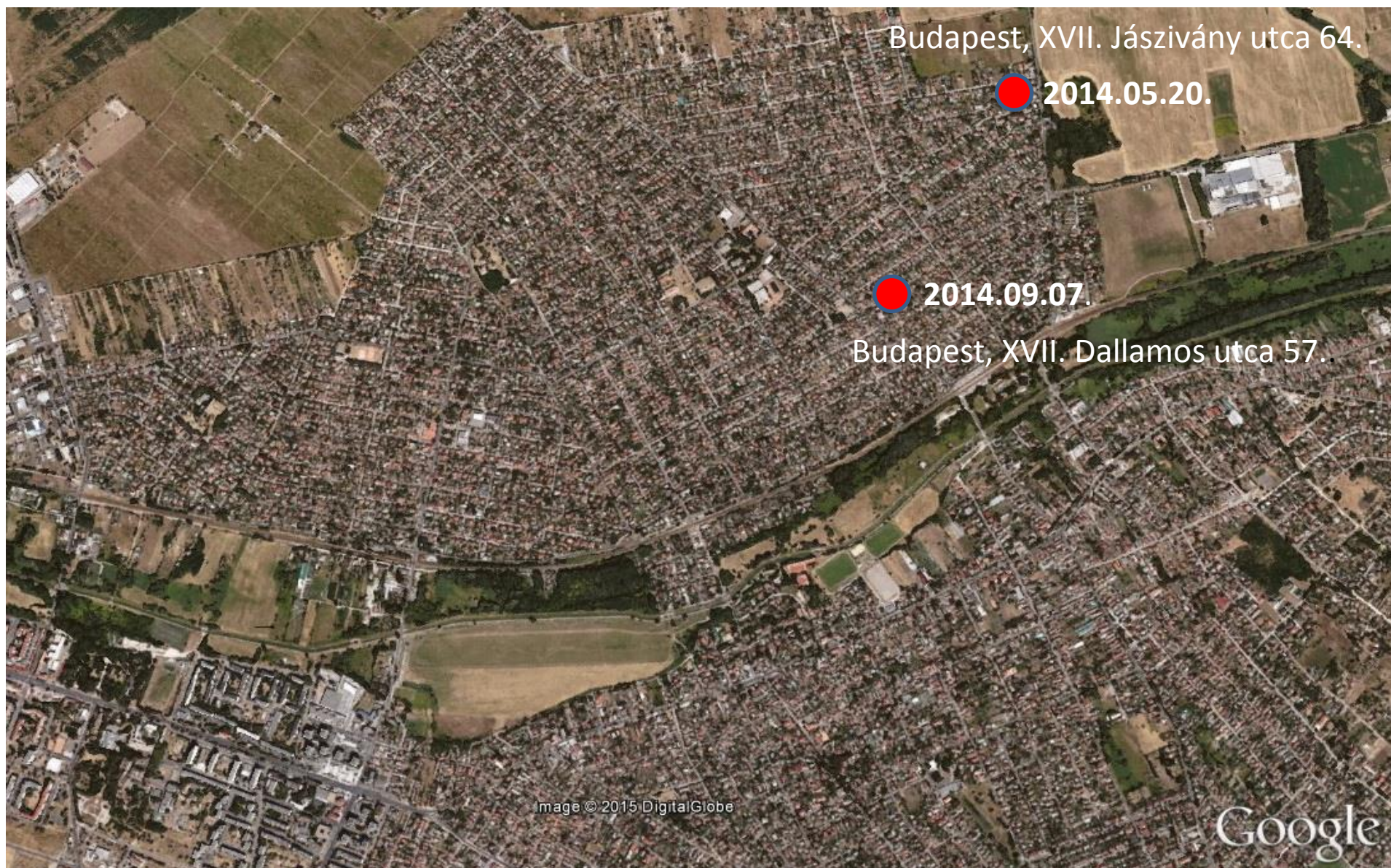
2015.05.20.

*http://www.faunaeur.org/full_results.php?id=439171

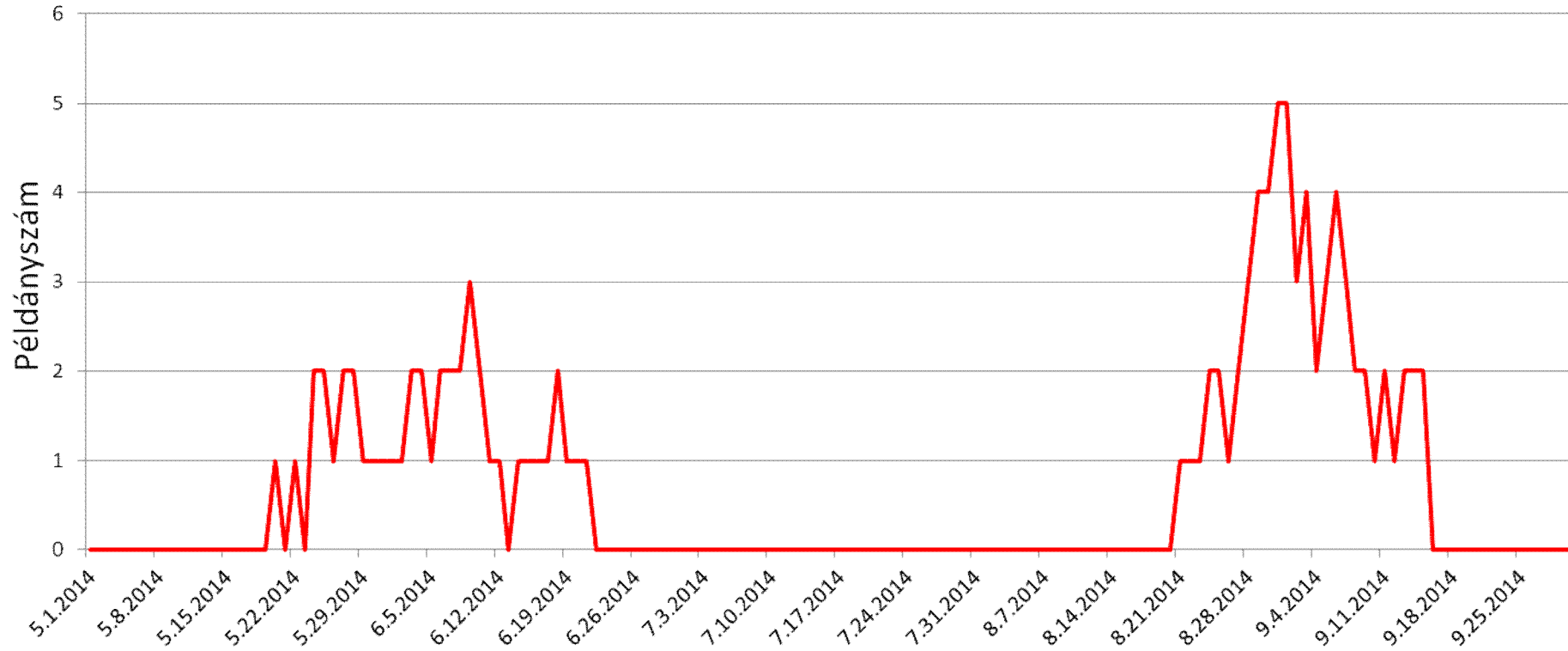
Almamoly (*Cydia pomonella*) feromoncsapda Juniperus fajon



A faj jelenlegi elterjedési területe, Budapesten



Boróka tükrösmoly (*Cydia interscindana*) rajzásdiagramja Budapest, XVII. Jászivány utca 64 sz. alatt 2014-ben



A következ településeken kerestük a fajt:

- ” **Csákvár**
- ” **Lovasberény**
- ” **Vérteskozma**
- ” **Vértesboglár**
- ” **Tápióság**

Boróka tükrösmoly (Cydia interscindana)







A kígyóaknás szőlőmoly (*Phyllocnistis vitegenella*, Clemens, 1859)



CONSTITUTION

AND

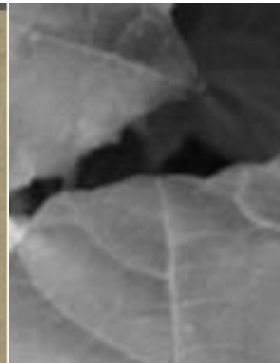
P. vitegenella.—Antennæ brownish silvery, fuscous at the tip. Head and thorax silvery white. Fore wings silvery white, slightly golden toward the tip, with a blackish dorsal patch on the inner margin near the base. Somewhat behind the middle of the wing is a black oblique costal streak and a black line curving from the costa to the inner margin. At the tip is a circular black spot, and before it on the costa two short, straight, black streaks. At the extreme tip of the wing are two blackish, diverging streaks in the cilia, with one of the same hue in the cilia beneath the apical spot nearly joining a black hinder-marginal line; cilia silvery. Hind wings silvery, cilia the same.

The larva mines the upper side of the leaf of *Vitis cordifolia* and perhaps other species, in September and October. The imago appears in September.

PHILADELPHIA.

E. KETTERLINUS PRINTER, N. W. COR. Arch & Fourth Streets.

1859.



nearly to the tip; apical portion reddish ferruginous. Hind wings dark gray, with a fuscous patch near the base; cilia pale fuscous. The male described.

There is but little difference between this and the foregoing species, either in the perfect or larval state. The larva mines the upper surface of oak leaves, in September. The head is dark brown; the body yellowish green, with a double dark brown macula on the dorsum of the first ring; vascular line very narrow and dark green. A more careful observation than I have given these insects may prove them to be the same, or the latter a variation. I have but a few of each of them. The imago appears early in May, and a spring brood will be found in early summer.

PHYLLOCNISTIS Zeller.

Head smooth, elongated above and clothed with imbricated scales. Front

clipeus.
visible
bird less
somewhat
i none.
ascend-
r coxæ.
In the
re sends
ll arises
ne costa
nds two
or wings
its mar-

forming
colletes
gments
ndrical.
luntary
ts mine

ly, long
the leaf
t is not

transparent. when full grown the end of the mine is enlarged and the cocoon woven in a little pucker of the leaf within the mine.

The perfect insect is very sluggish, at rest carrying its antennæ thrown backward, but arched somewhat above the dorsal surface.

P. vitegenella.—Antennæ brownish silvery, fuscous at the tip. Head and thorax silvery white. Fore wings silvery white, slightly golden toward the tip, with a blackish dorsal patch on the inner margin near the base. Somewhat behind the middle of the wing is a black oblique costal streak and a black line curving from the costa to the inner margin. At the tip is a circular black spot, and before it on the costa two short, straight, black streaks. At the extreme tip of the wing are two blackish, diverging streaks in the cilia, with one of the same hue in the cilia beneath the apical spot nearly joining a black hinder-marginal line; cilia silvery. Hind wings silvery, cilia the same.

The larva mines the upper side of the leaf of *Vitis cordifolia* and perhaps other species, in September and October. The imago appears in September.

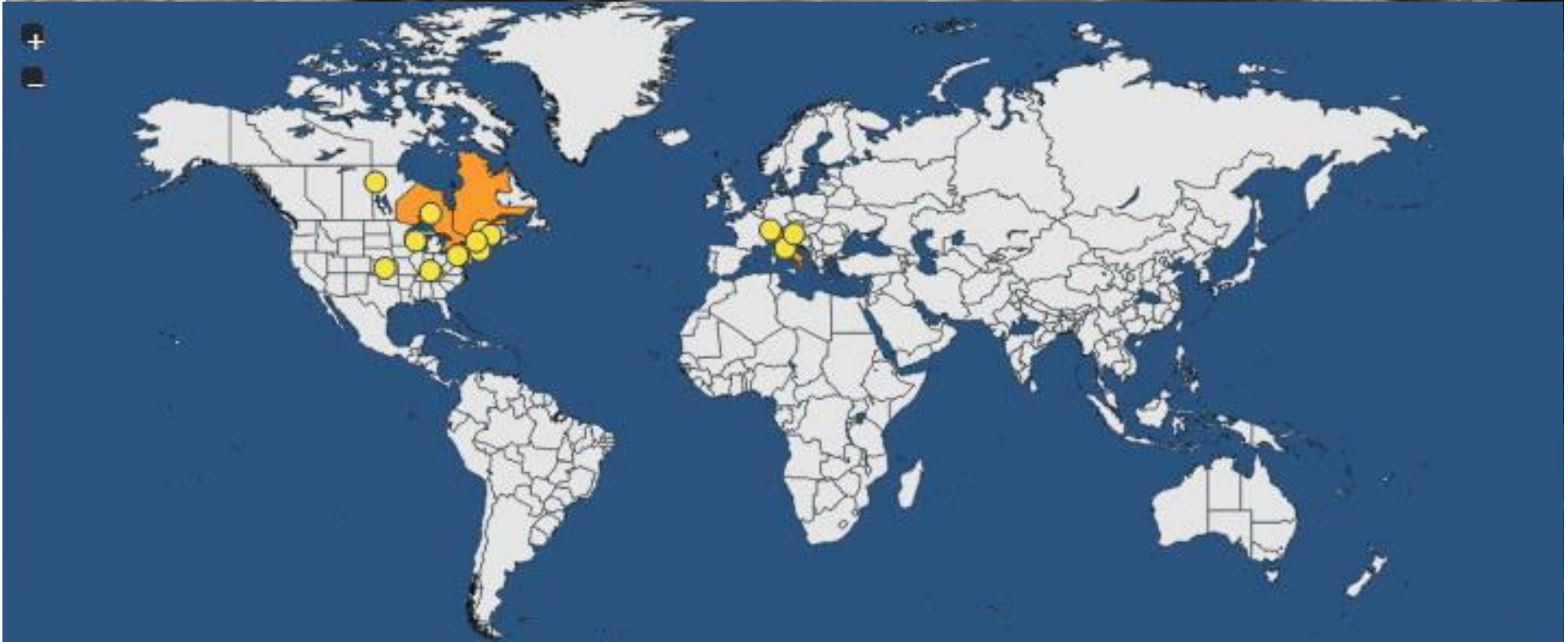
PHYLLOCNISTIS.

Head slightly hairy above on the vertex. The front smooth, covered with closely appressed scales, broad, even beneath and somewhat inclined. The 1859.]

24

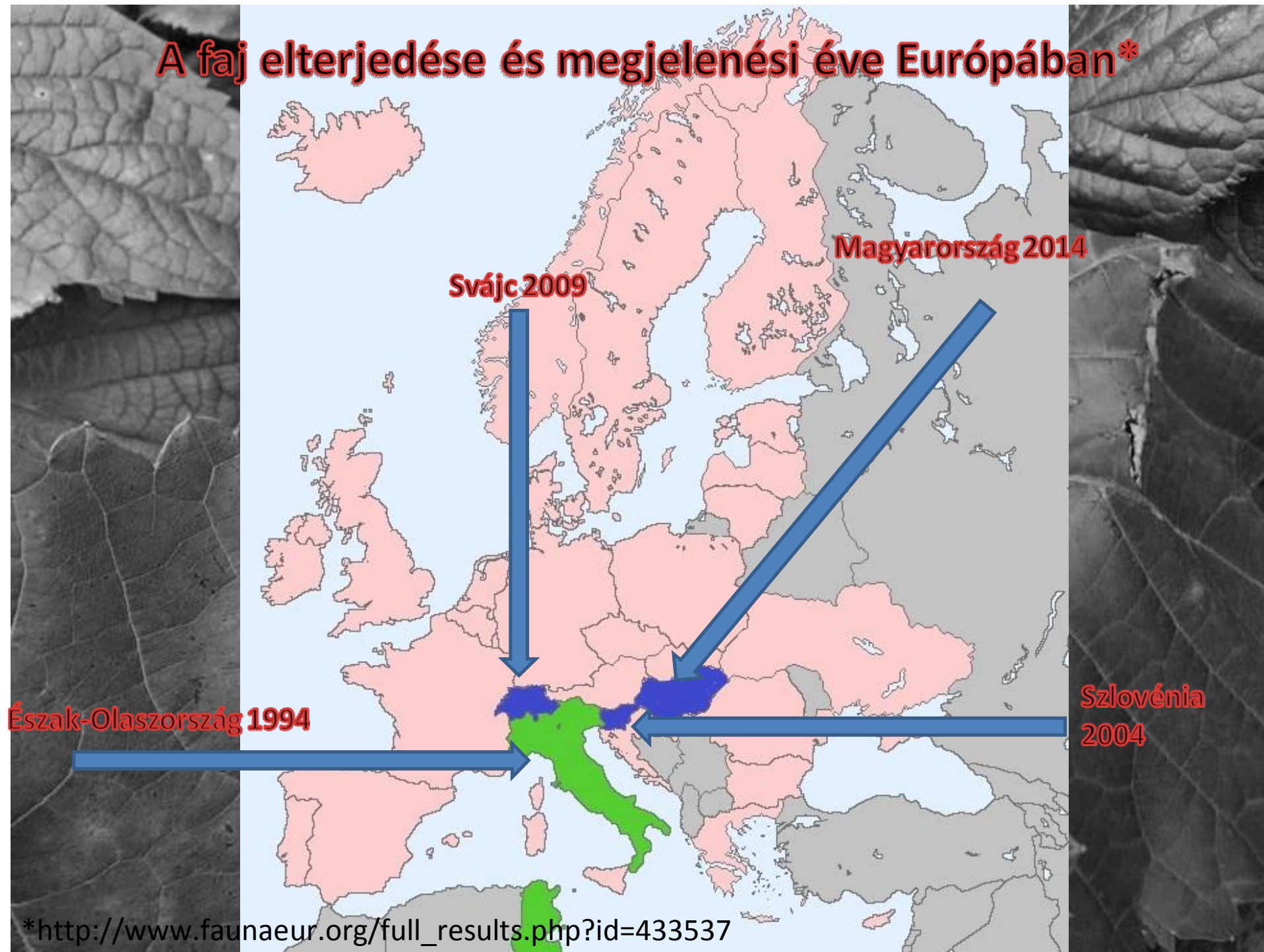


A faj elterjedési területe a földön



<https://gd.eppo.int/taxon/PHYNVI/distribution>

A faj elterjedése és megjelenési éve Európában*



*http://www.faunaeur.org/full_results.php?id=433537

Település	A fajt megtaláltuk	A fajt nem találtuk meg
Budapest, III., X., XI., XII., XIII., XIV., XV., XVI., XVII.,	X	
Gödöll	X	
Tápióság	X	
Nagykáta	X	
Tápiószecs	X	
Csákvár		X
Vérteskozma		X
Gánt		X
Zirc		X
Bakonynána		X
Jásd		X
Nógrád		X
Fels petény		X
Becske		X
Nagybárcány		X
Mátraverebély		X
Ágasvár		X
Mátraszentistván		X
Szigetcsép	X	

A kígyóaknás szőlőmoly (*Phyllocnistis vitegenella*, Clemens, 1859)
aknája a bábölcsővel



**Hernyó a kibontott
aknában**


Hernyó az aknában

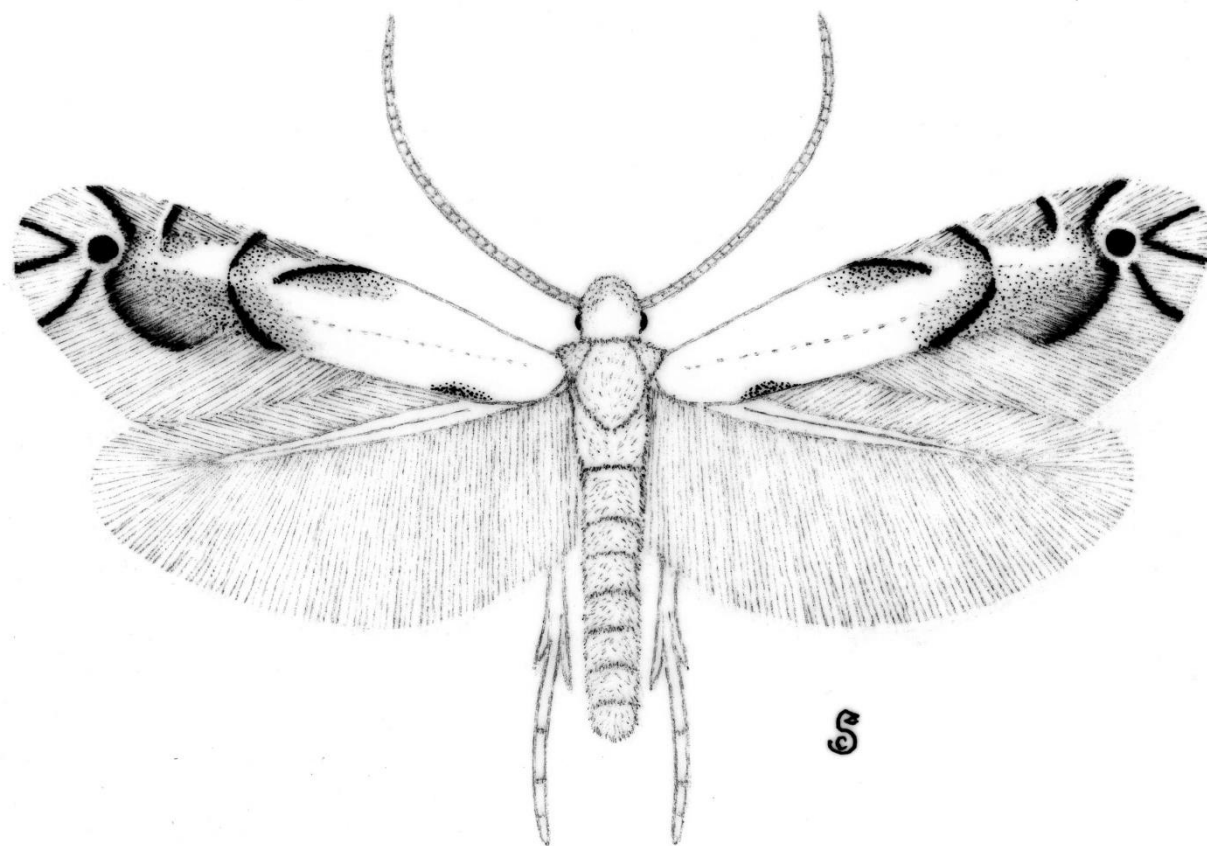


A megbontott bábölcsőben a báb



Fotó: Babics János

- 
- ” A hernyó felső aknát készít
 - ” A faj Magyarországon két generációs
 - ” Az imágók() mesterséges fényre repülnek
 - ” Az imágó telel



Phyllocnistis vitegenella Clemens, 1859 - kígyóaknás szőlőmoly

2014 szeptember

Köszönjük a figyelmet!

