

**10 years  
of „community-led local development”  
in the Koppány-valley  
using EAFRD, ESF and other funds**

Géza Gelencsér

Vox Vallis Development Association

Koppány-valley LAG

# **contents**

- 1. Local challenges**
- 2. The local community development story**
- 3. Results**
- 4. Lessons**

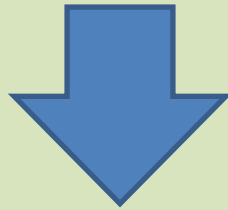
An underwater photograph showing a sandy seabed with gentle ripples and a clear blue water column above. The lighting is soft and diffused, typical of an underwater environment.

**1.**

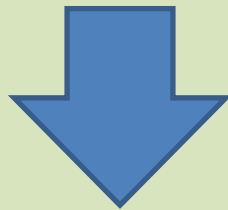
***Local challenges***

# Challenges have specific „Eastern characteristics”

which have always been remaining unconsidered



so far EU funds supported ***growing territorial and social differences*** (unbalanced development) in Hungary



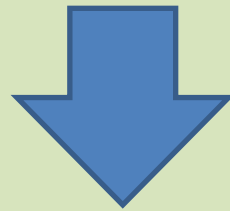
**DIFFERENT APPROACH (TOOLS) NEEDED!**

# Rural society

- High % of active age inactives
- Weak (*lack of*) communities
- Poverty (*socialist era, privatisation, „wild capitalism“*)
- Lack of middle class
- Depopulation (ageing, outmigration of youth)
- Worsening health status

# Rural economy

- weak SME sector
- lack of cooperation and networking
- „colonial” agriculture:
  - dominancy of large scale farming producing unprocessed mass crops with environmental and social costs unpaid;



Full dependency on imported food and energy, lack of local products.

# Rural environment

- High agro-ecological potential;
- Rich in surface and groundwater;
- Rich biodiversity;
- Unsustainable use of resources (large scale farming):
  - Lack of water retention – maximised run-off;
  - Diffuse contamination of water stock;
  - Soil erosion;
  - Biodiversity degradation: agrochemicals, fragmentation

# ...and what only the „CLLD” could see: **the specific LOCAL situation**

- Small, underdeveloped, unassertive villages (50-500 inh.);
- Severe depopulation (5%/year)
- 1-2 small farmer / village – former „kolkhoz” still dominating and suppressing
- No SMEs (also coming from the former coding of „going private = not the honest way of living”)
- Hilly topography – severe soil loss, no water retention
- Rich but quickly eroding natural and cultural heritage
- Household production capacities survived the coop-era
- Most of the inactives are „unemployable” – need social work (therapy)
- Some (not all!) places have touristic potential



**an added value of CLLD:**

**specific characteristics**

**can only be detected and tackled locally**

**(in a Local Development Strategy)**

# Basic aims of our LDS

„solar” capital	Enhancing household and community use of <b>renewable energy</b> (mainly sun and biomass) Enhancing <b>self sufficiency in food</b> (developing local products by integrating household/backyard production)
human capital	Reduce outmigration of youth and enhance immigration of educated people; Strengthening local primary and vocational education, as well as LLL; Strengthening innovation; Assisting social integration.
heritage	Exploring, maintaining, as well as sustainable use of values

## 2. The local community development story



# „Preparatory phase” 2002 – 2004

- „second-house” owners’ dialogue and collaboration for the most underdeveloped villages;
- preparation and management of grant applications (renovation of the school, etc);
- recognition of the need for a broader local cooperation and for an organisation with local development mission;
- stimulating local dialogue and recruiting a local team of motivated inhabitants;

# The foundation stone: November 2004

- Establishing VOX VALLIS Development Association;
- „immigrant“ : native members = 50 % : 50 %
- Mission: enhancing **sustainable** local economic, social and environmental systems
- First goals: developing absorption capacity (organisational, operational and knowledge)

# The evolution: 2004 -

- 2005 becoming LEADER+ LAG
- 2008 founding our social enterprise (SZOVISZ, founded by the 10 poorest villages)
- 2007 coordinating LEADER and organising the new, extended LAG (Koppány-valley)
- 2010 elaborating applications and receiving ESF grants (TÁMOP 513 – fighting poverty)

***TODAY: working as a general local development agency - most of the members are native***

Human resources:

Vox Vallis 14, LAG 3, SZOVISZ 3 employees





3.

Results

# Programmes - projects

- **Strengthening local economy:**

(primarily: creating local product infrastructure)

- community fruit-jam making unit;
- community fruit-brandy distillation unit;
- breeding programme for a native poultry variety;
- breeding programme for native fruit varieties;
- marketing and markets;
- tourism cooperation systems (hiking trails, community owned services, archery field)



# Programmes - projects

- **Developing / strengthening communities:**
  - creating and strengthening our social enterprise;
  - organising and strengthening new civil organisations;
  - creating community centres (IKSZT programme);
  - common equipment park for community events;
  - revitalising a traditional local sport;
  - social employment programmes;

# Programmes - projects

- **Developing the environment:**
  - elimination and recultivation of local illegal waste landfills;
  - rehabilitation of ecological habitats ;
  - ecological monitoring - forest school;
  - biomass based energy production (pelletizing, briquet)





# Social employment







jam-making workshop  
for the unemployed





# BRIQUET MAKING



# FROM HAY

# Selected example 1.

## Community service center (IKSZT), Törökkoppány

(post office; Internet access; library; rooms for the agricultural and the family advisor; room for events, exhibitions and workshops)

### EARDF

Construction and equipment (incl. solar panels)

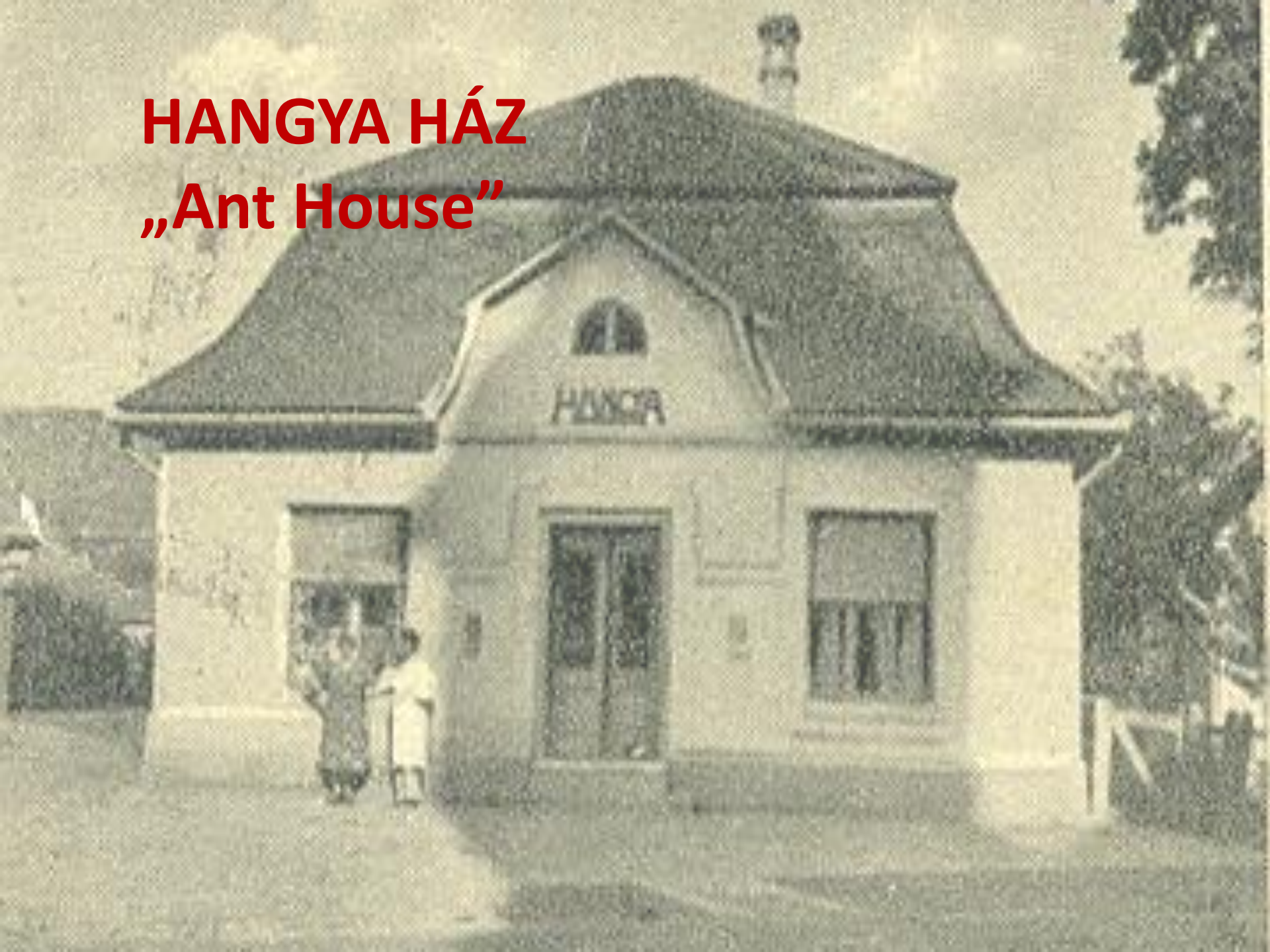
### ESF

Human resources and programmes

(social workers, community and local development experts organising trainings, awareness campaigns, events)



**HANGYA HÁZ**  
**„Ant House”**









1931

Ez a ház 1931-ben épült a vidéki népesség  
megerősítésére létrehozott  
Hangya Szövetkezet boltjaként.  
Az  
épület felújítását és közösségi célú átalakítását  
Törökkoppány Község Önkormányzatával  
együttműködve  
a Völgy Hangya Egyesület végezte el 2011-ben.









# Selected example 2.

**Entrepreneurship training in primary schools based on local products**

**EARDF**

**community owned fruit processing unit  
school stable with milk processing unit**

**ESF**

**curricula, trainings**

















savanyúsalá  
400 Ft

350 Ft

300 Ft

300 Ft

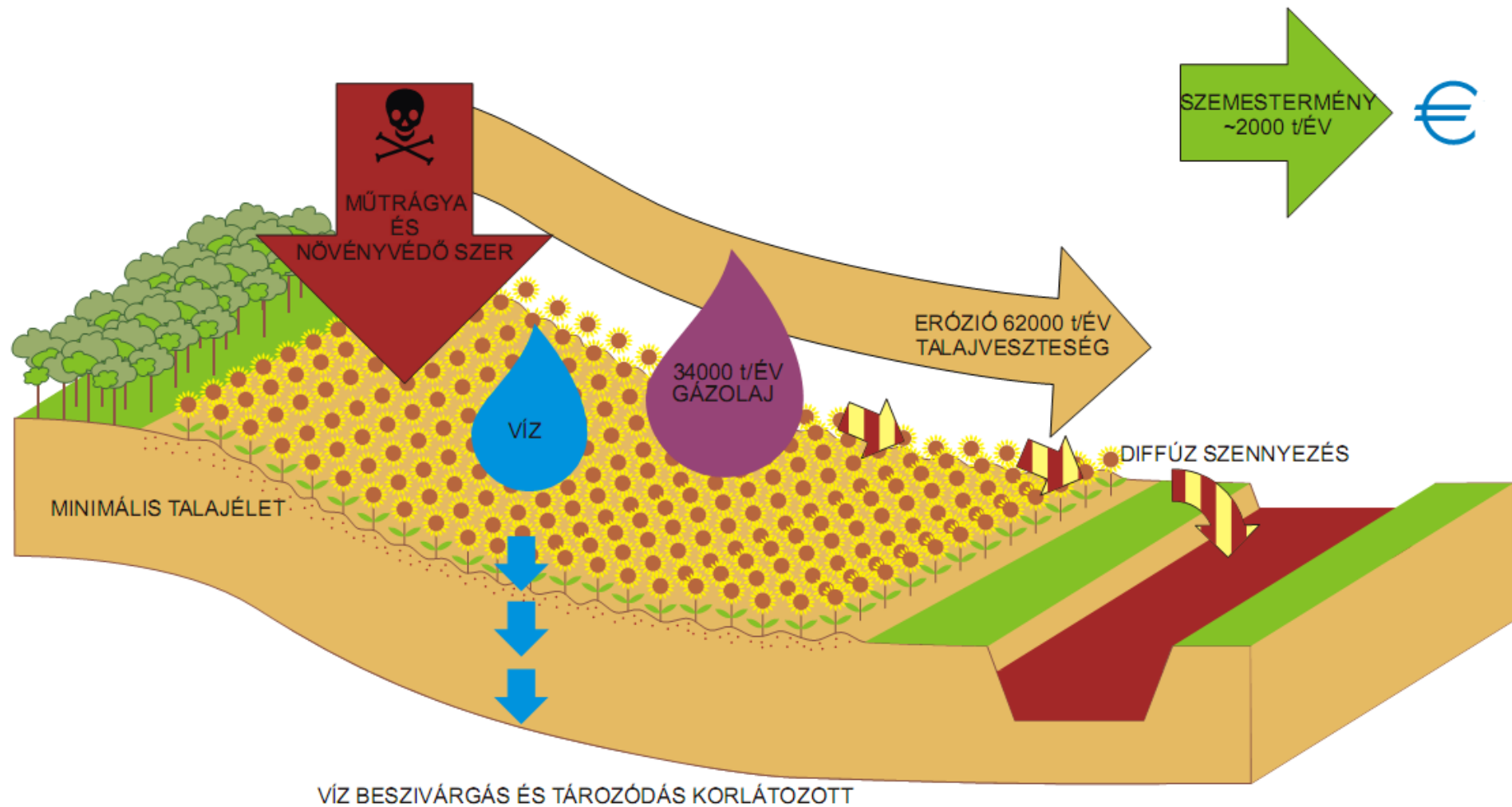
300 Ft

## Selected example 3.

### **„Awakening Koppány-valley” complex sustainability project** *(ongoing)* :

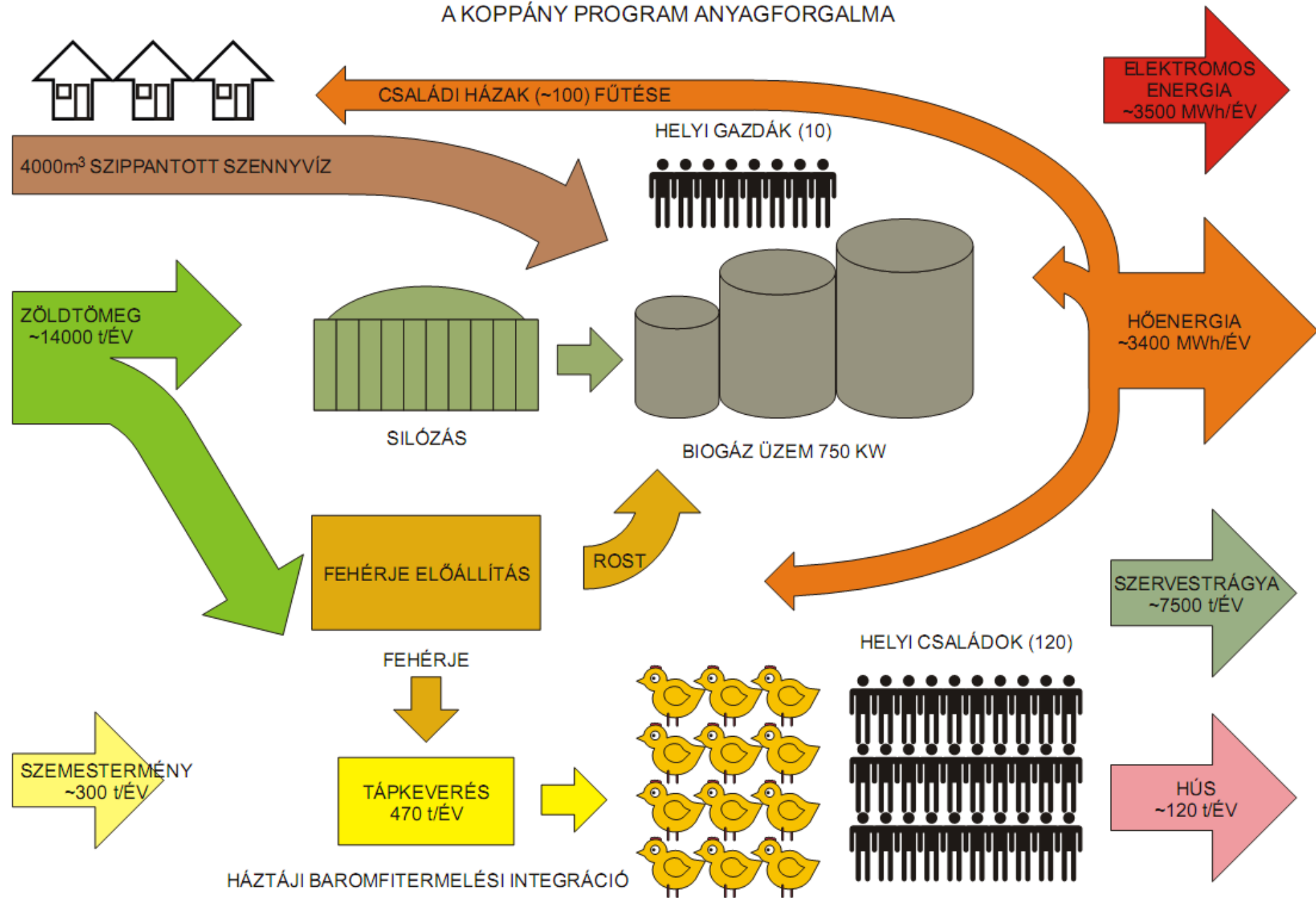
- new production alternatives for small farmers;
- enhance climate resilience: stop soil erosion and biodiversity loss, increase water retention;
- create local food products;
- increase local income generation potential;
- increase renewable energy production from biomass;
- reform and strengthen local vocational training;

# 400 ha HAGYOMÁNYOS SZÁNTÓFÖLDI GAZDÁLKODÁS FŐBB KÖRNYEZETI HATÁSAI

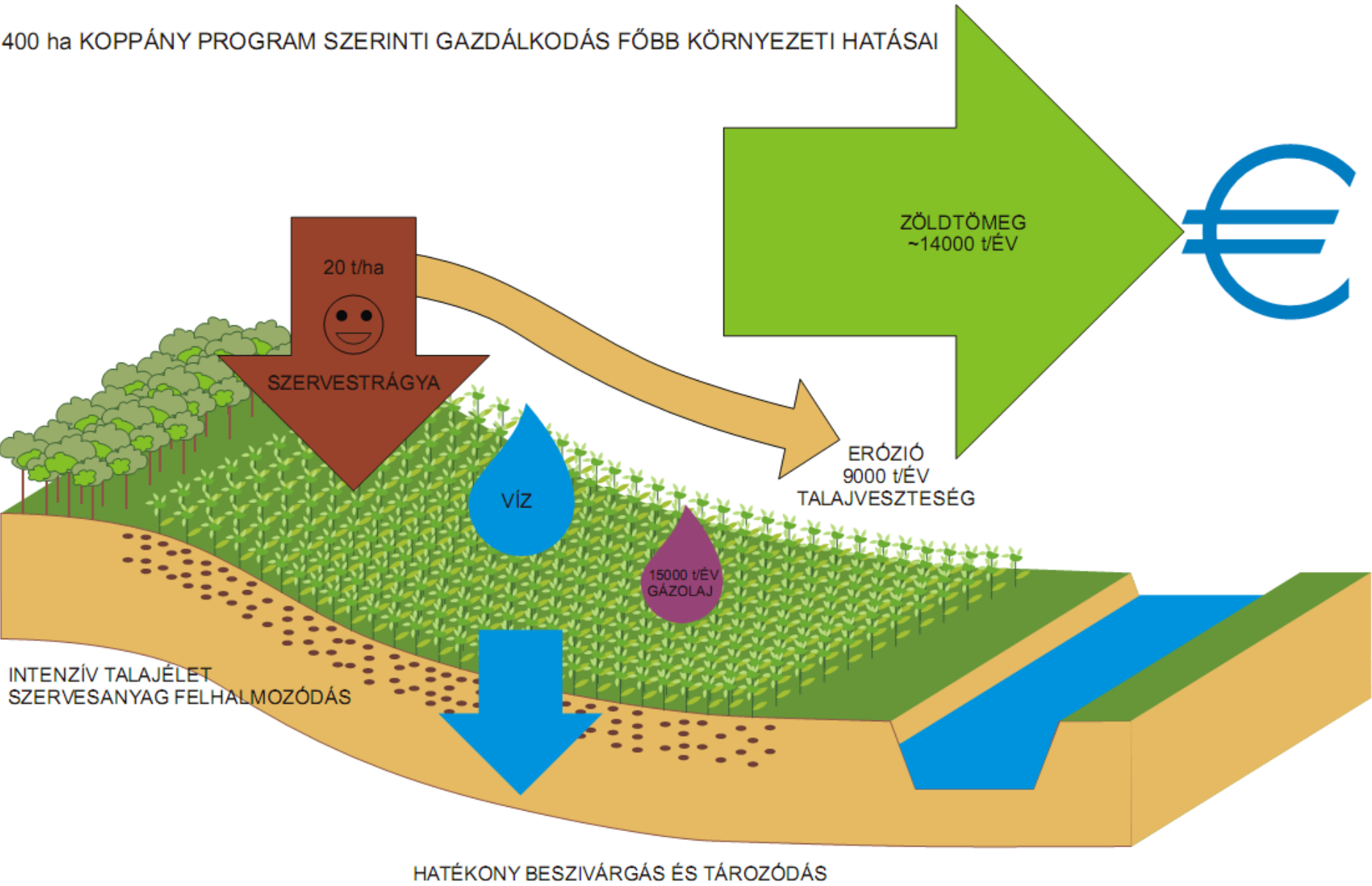




# A KOPPÁNY PROGRAM ANYAGFORGALMA



400 ha KOPPÁNY PROGRAM SZERINTI GAZDÁLKODÁS FŐBB KÖRNYEZETI HATÁSAI



## **ESF:**

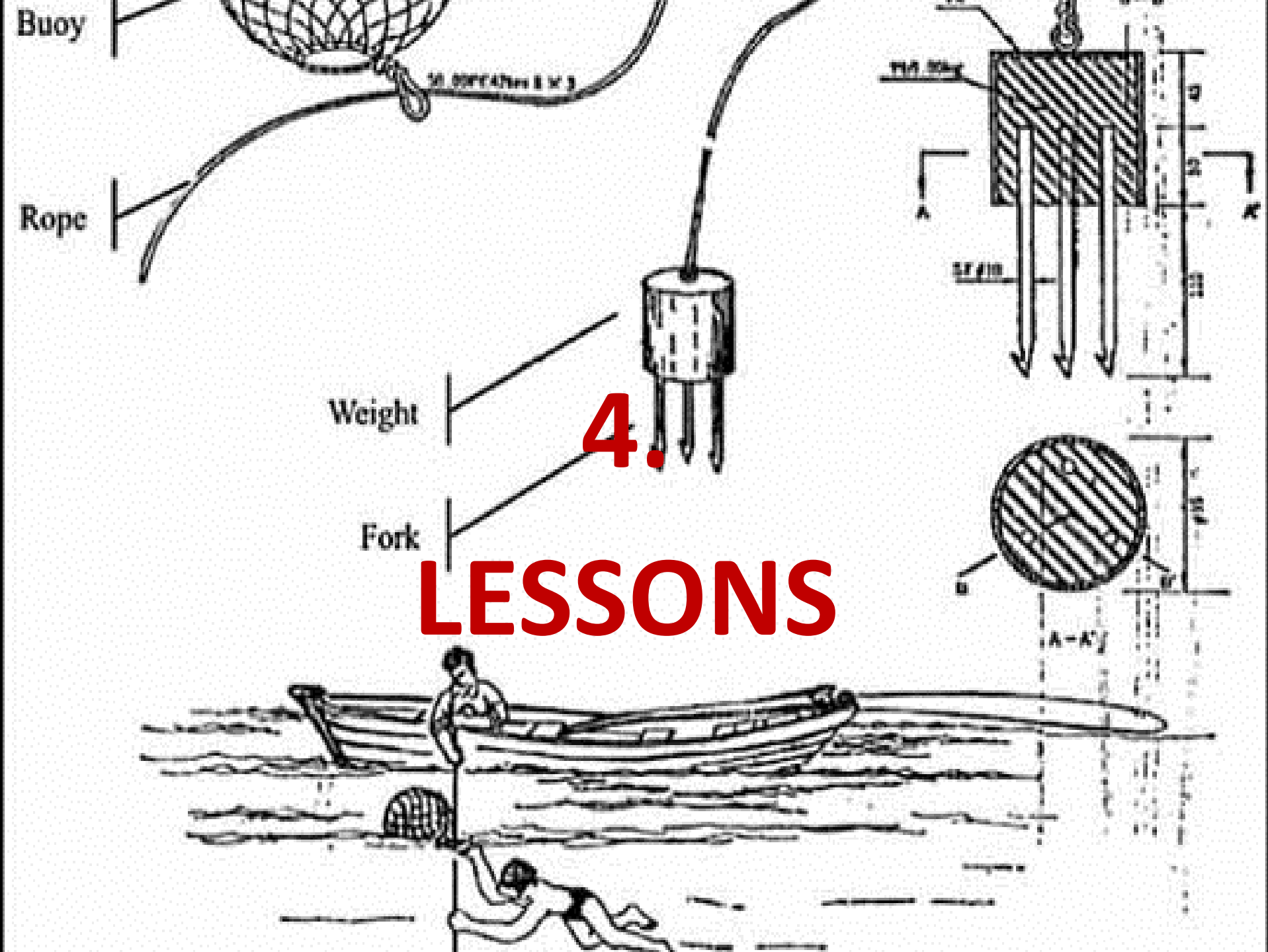
awareness raising, community development, school programmes;  
adult training;

## **EARDF:**

motivating, animating and organising farmers,  
study visits and cooperation, planning;  
native poultry variety breeding programme;

## **LEONARDO innovation transfer programme:**

adapting and introducing a state of the art Austrian curricula on renewable energy technician training for the local vocational school



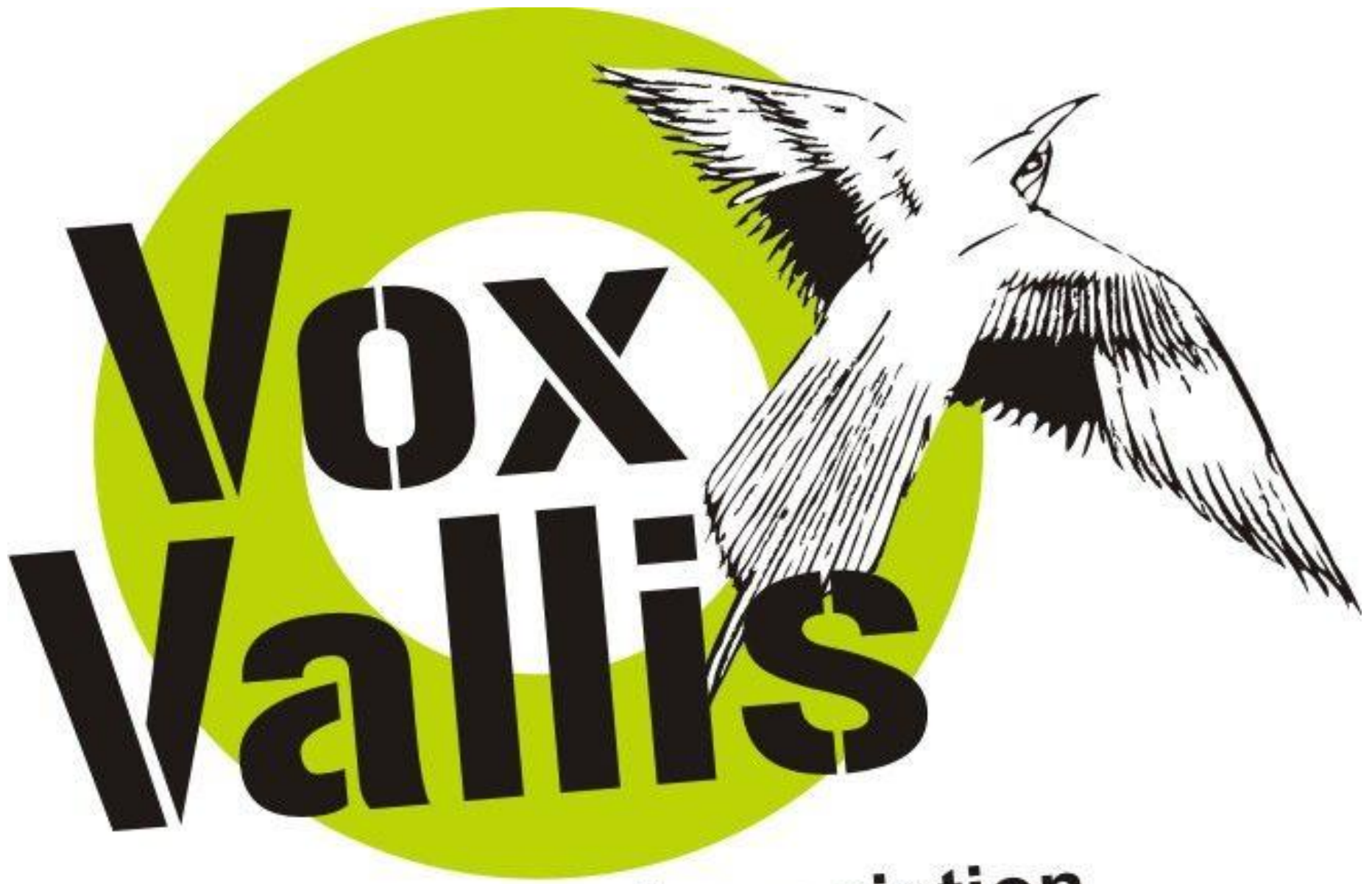
4.

# LESSONS

## **ESF EARDF joint mission in Hungary: make the lagging behind, costly regions with concentrated problems autonomous, self-sufficient and strong communities**

- Local „presence” of professional development capacities is a must for success!
- Build on existing capacities = LAGs
- Sustainable results need longer timeframes
- External capacities (guidance, human resources) are needed, esp. in lagging behind regions
- One-off, „demarcated” central calls for projects are not good for rural development





**Development Association**